



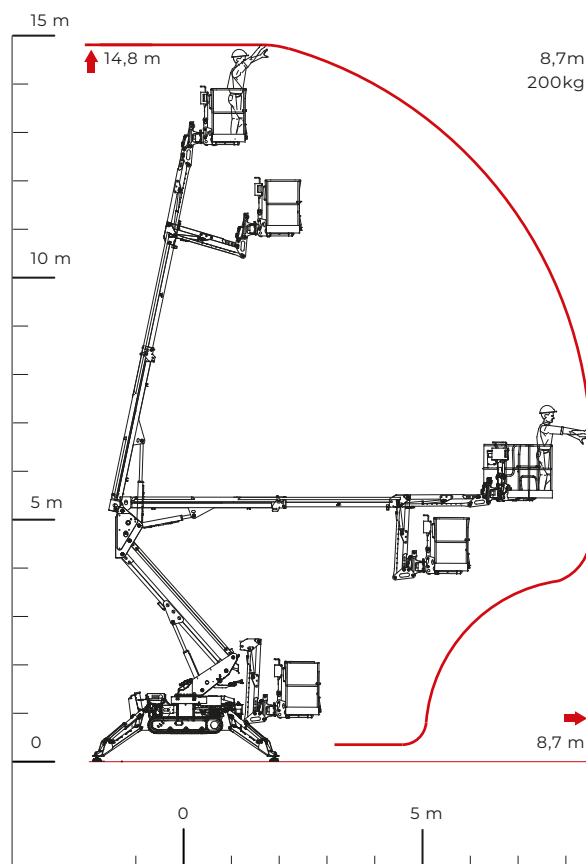
## TECHNICAL SHEET

### PERFORMANCE AND DIMENSIONS

#### Main features

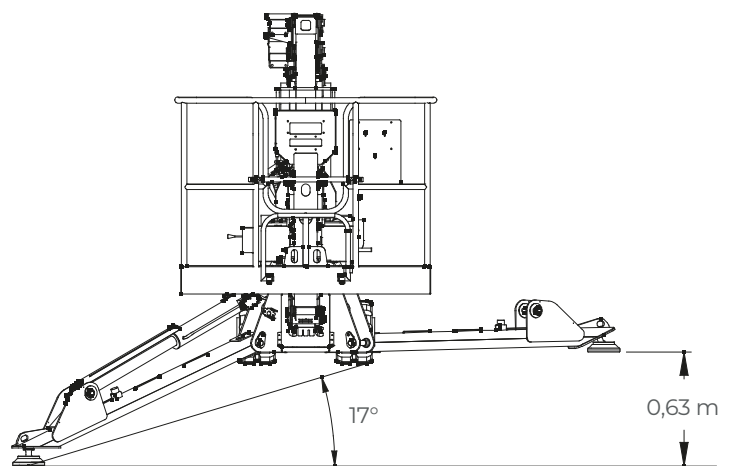
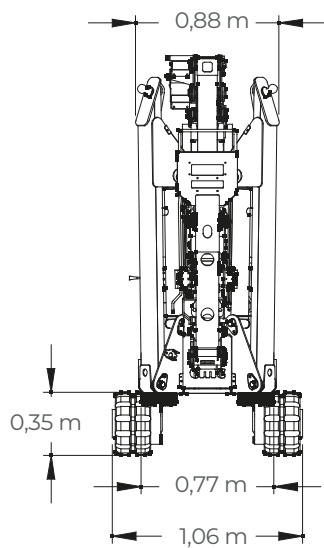
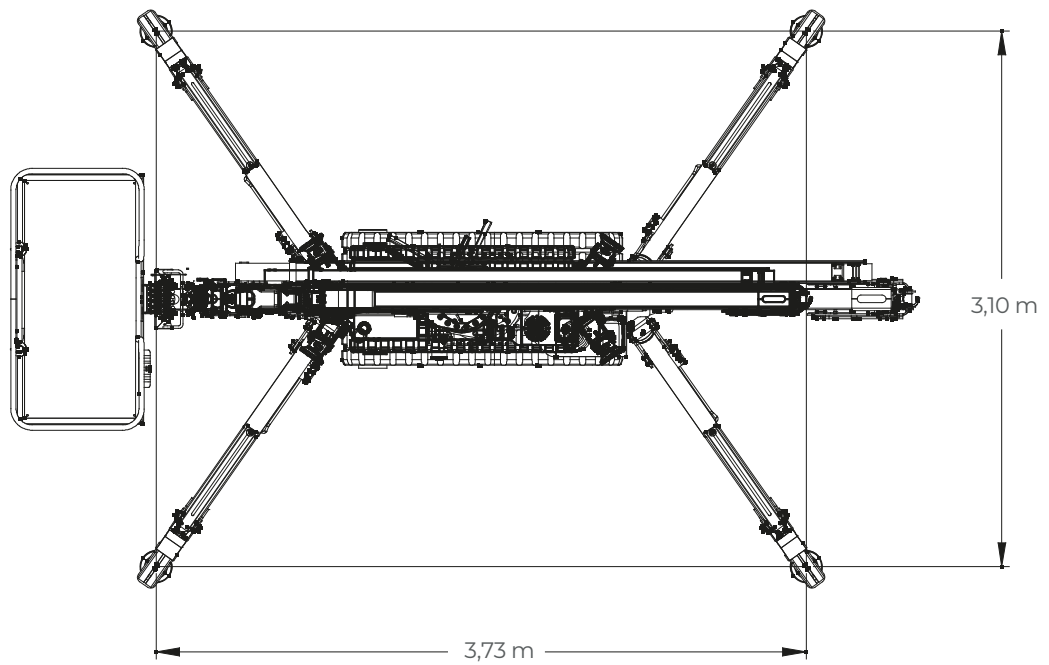
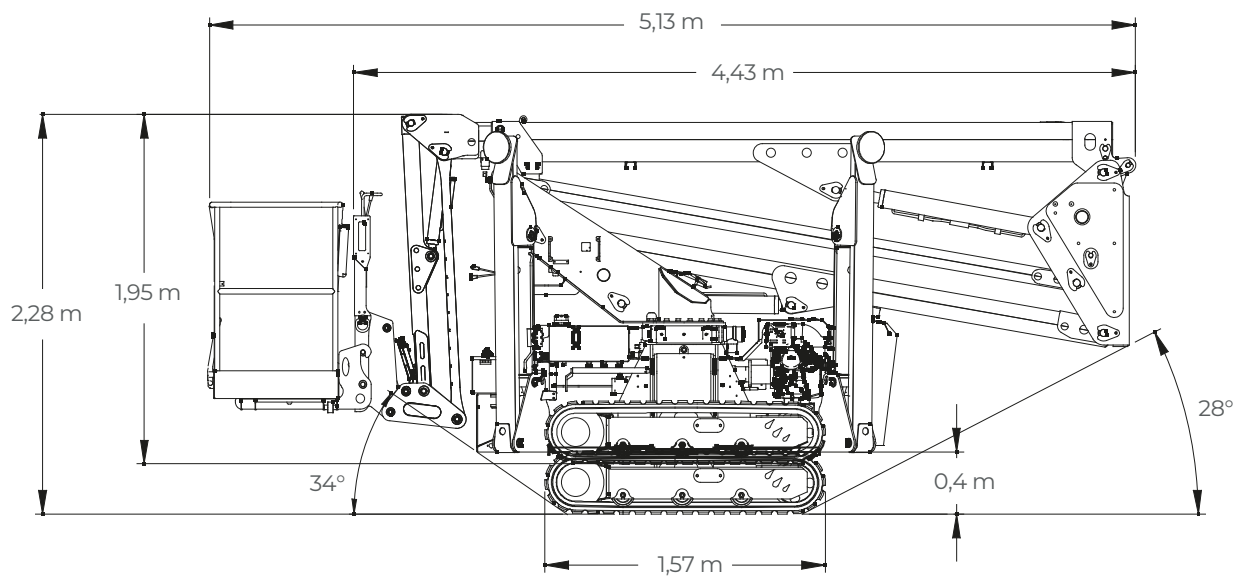
Geometric platform without outreach limiting device, with pantograph and single telescopic extension boom plus jib. It offers excellent performance in all types of work, thanks to a compact stabilisation area that provides maximum stability even on the most difficult of surfaces.

Max. working height	<b>14,8 m</b>
Max. reach with 200 kg	<b>8,7 m</b>
Platform height	<b>12,8 m</b>
Max. load in basket	<b>200 kg</b>
Basket dimensions	<b>1,4 x 0,7 x 1,1 m</b>
Basket rotation	<b>+/-90° (options)</b>
Turret rotation	<b>+/- 178° (356° non-continuous)</b>
Total weight	<b>2378 Kg</b>



C.M.C. s.r.l.  
Via Bitritto, 119 - 70124 Bari - Italy  
Tel. +39 080 532 66 06  
cmclift.com - info@cmclift.com





<b>PERFORMANCE</b>	
Max. working height	14,80 m
Max. working outreach	8,23 m (with 200 kg and without basket rotation)
Max. working outreach	8,70 m (with 200 kg and basket rotation)
Max. basket capacity	200 kg
Jib movement	+/- 90°
Turret rotation	+/-178° (tot. 356°)
*Basket rotation	+/-90°
Max. ramp attack slope with lifted jib	34° - 67%
Max. longitudinal slope to travel	18° - 32%
<b>DIMENSIONS</b>	
Total length with fixed basket/with rotating basket*	5,13/5,30 m
Total length without fixed basket/without basket and with rotated bracket*	4,43/4,58 m
Height in driving position with tracks closed	1,95 m
Height in driving position with tracks opened	2,28 m
Total width without basket	0,78 m
Outriggers plate Ø	0,18 m
Total weight (standard equipment)	2378 kg
<b>BASKETS AVAILABLE</b>	
One man aluminum basket (L x W x H)	0,80x0,70x1,10 m
Two men aluminum basket (L x W x H) with quick release system and wheels	1,40x0,70x1,10 m
*One man fiberglass basket (L x W x H)	0,80x0,60x1,10 m
*Two men fiberglass basket (L x W x H)	1,20x0,60x1,10 m
<b>PRESSURES</b>	
Max. pressure on the foot	5,40 kg/cm <sup>2</sup>
Max. pressure on the tracks	0,22 kg/cm <sup>2</sup>
Max. pressure in work	196,00 kg/cm <sup>2</sup>
<b>TRAVEL SPEED (KM/H)**</b>	
Honda (i)GX 390	Speed 1: 0,60 km/h Speed 2: 0,83 km/h Speed 3: 1,24 km/h
Yanmar L100V/L100N*	Speed 1: 0,55 km/h Speed 2: 0,75 km/h
Auxiliary electric engine 110/230 V*	Speed 1: 0,90 km/h Speed 2: 1,24 km/h
Full Lithium version 48 V*	Speed 1: 0,57 km/h Speed 2: 1,13 km/h Speed 3: 1,64 km/h
<b>POWERS</b>	
Standard engines	Honda Igx390 petrol, 8,7 kW (11.7 HP), 3600 rpm Yanmar L100V/L100N diesel, 6.8 kW (9.3 HP), 3600 rpm
*Options engines	Auxiliary electric engine 110/230 V - 2.2 kW Full lithium version (electric motor G0901306, 9 kW, 48 V, with 160 Ah lithium batteries)
Fuel tank capacity	6,1 / 15 l
* Options - ** these data may vary depending on the accessories chosen	