



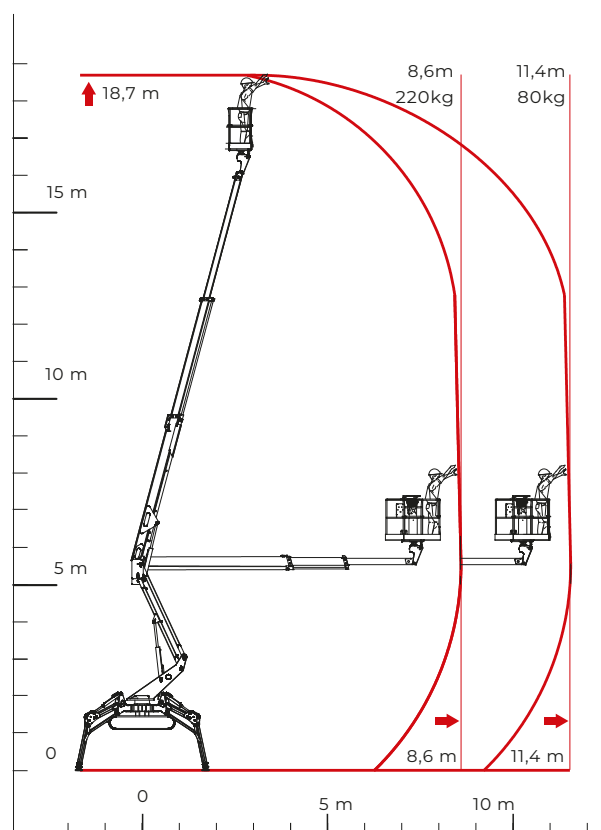
## TECHNICAL SHEET

### PERFORMANCE AND DIMENSIONS

#### Main features

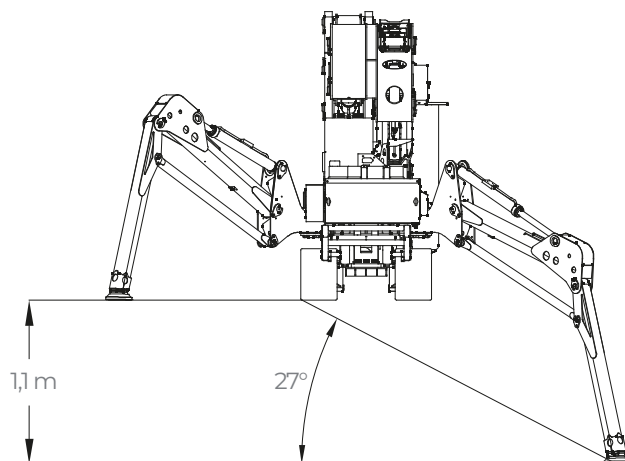
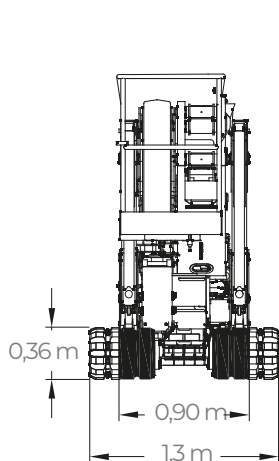
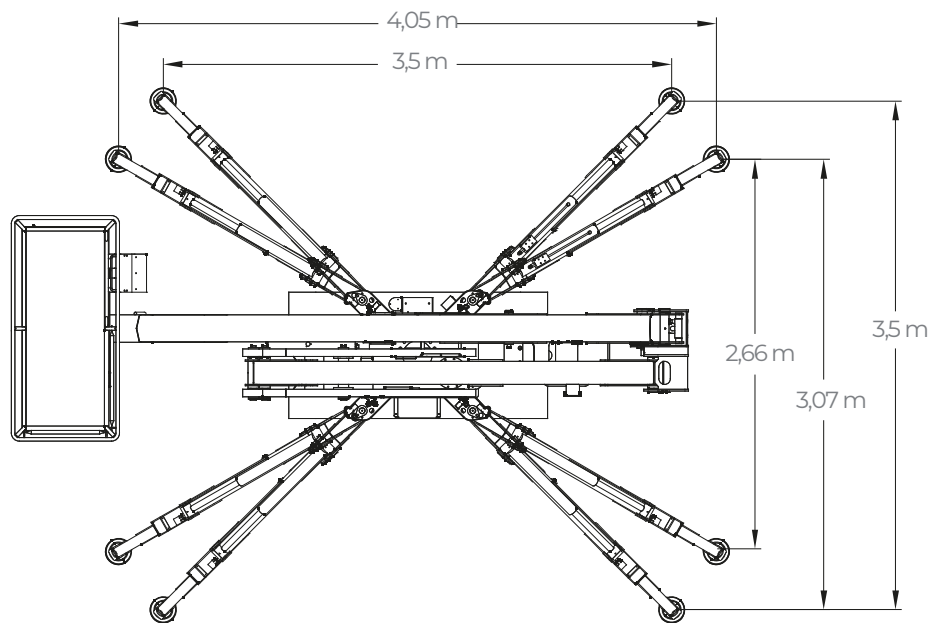
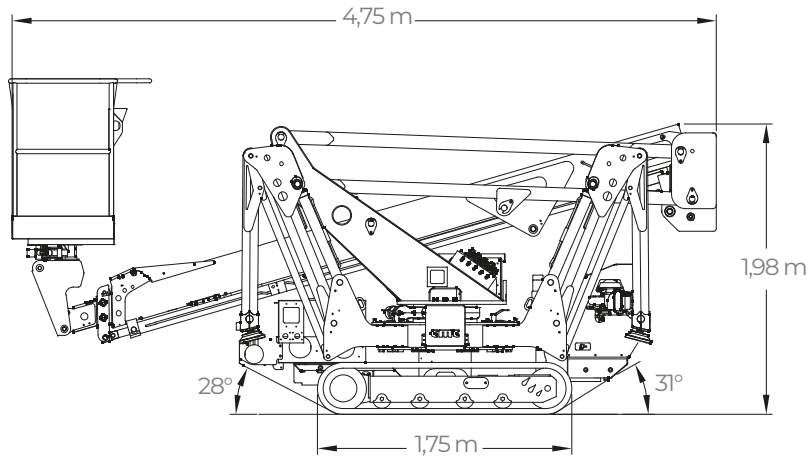
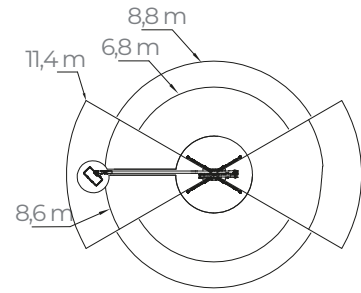
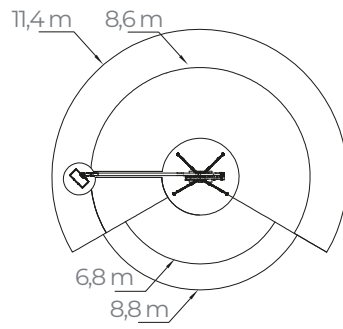
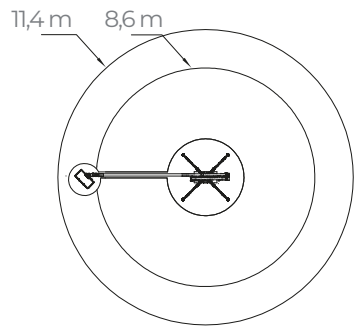
This articulated platform with pantograph and telescopic boom offers outstanding performance thanks to its stabilizers of high levelling capacity. Designed for maximum work performance on the toughest terrain, it's an excellent alternative to a truck-mounted platform.

Max. working height	<b>18,7 m</b>
Max. reach with 80 kg	<b>11,4 m</b>
Platform height	<b>16,7 m</b>
Max. load in basket	<b>220 kg</b>
Basket dimensions	<b>1,4 x 0,7 x 1,1 m</b>
Basket rotation	<b>+90°/-87° (options)</b>
Turret rotation	<b>+/- 355° (710° continuous)</b>
Total weight	<b>2685 Kg</b>



C.M.C. s.r.l.  
Via Bitritto, 119 - 70124 Bari - Italy  
Tel. +39 080 532 66 06  
cmclift.com - info@cmclift.com





<b>PERFORMANCE</b>	
Max. working height	18,70 m
Max. working outreach with rotating basket	11,40 m(with 80 kg)
Max. working outreach with fixed basket	11,10 m (with 80 kg)
Max. working outreach with rotating/fixed basket	8,60 m (with 200 kg)
Max. basket capacity	220 kg
Turret rotation	+/-355° (tot. 710°)
*Basket rotation	+90°/-87°
Max. ramp attack slope with lifted jib/on engine side	31° - 60%
Max. longitudinal slope to travel	17° - 31%
<b>DIMENSIONS</b>	
Total length with fixed basket	4,75 m
Height in driving position	1,98 m
Total width without basket	0,90 m
Outriggers plate Ø	0,18 m
Total weight (standard equipment)	2685 kg
One man aluminum basket (L x W x H)	0,80x0,70x1,10 m
Two men aluminum basket (L x W x H) with quick release system and wheels	1,40x0,70x1,10 m
*One man fiberglass basket (L x W x H)	0,80x0,60x1,10 m
*Two men fiberglass basket (L x W x H)	1,40x0,60x1,10 m
<b>PRESSURES</b>	
Max. pressure on the foot	6,60 kg/cm <sup>2</sup>
Max. pressure on the tracks	0,17 kg/cm <sup>2</sup>
Max. pressure in work with 4 outriggers opened	228,00 kg/cm <sup>2</sup>
Max. pressure in work with 4 outriggers closed	242,00 kg/cm <sup>2</sup>
Max. pressure in work with 2 outriggers opened and 2 closed	236,00 kg/cm <sup>2</sup>
<b>TRAVEL SPEED (KM/H)**</b>	
Honda (i)GX 390	Speed 1: 0,29 km/h Speed 2: 0,72 km/h Speed 3: 1,44 km/h
Yanmar L100V/L100N*	Speed 1: 0,43 km/h Speed 2: 0,71 km/h Speed 3: 1,20 km/h
Kubota Z602*	Speed 1: 0,78 km/h Speed 2: 0,97 km/h Speed 3: 1,80 km/h
Auxiliary electric engine 110/230 V*	Speed 1: 0,27 km/h Speed 2: 0,27 km/h Speed 3: 0,54 km/h
Full Lithium version 48 V*	Speed 1: 0,45 km/h Speed 2: 0,51 km/h Speed 3: 1,03 km/h
<b>POWERS</b>	
Standard engines	Honda iGX390 petrol, 8,7 kW (11.7 HP), 3600 rpm Yanmar L100V/L100N diesel, 6.8 kW (9.3 HP), 3600 rpm Auxiliary electric engine 110/230 V - 2.2 kW with battery charger
*Options engines	Full lithium version (electric motor G0901306, 9 kW, 48 V, with 160 Ah lithium batteries) Kubota Z602-E4B diesel, 10.8 kW (14.5 HP), 3200 rpm
Fuel tank capacity	6,1 / 15 l
* Options - ** these data may vary depending on the accessories chosen	